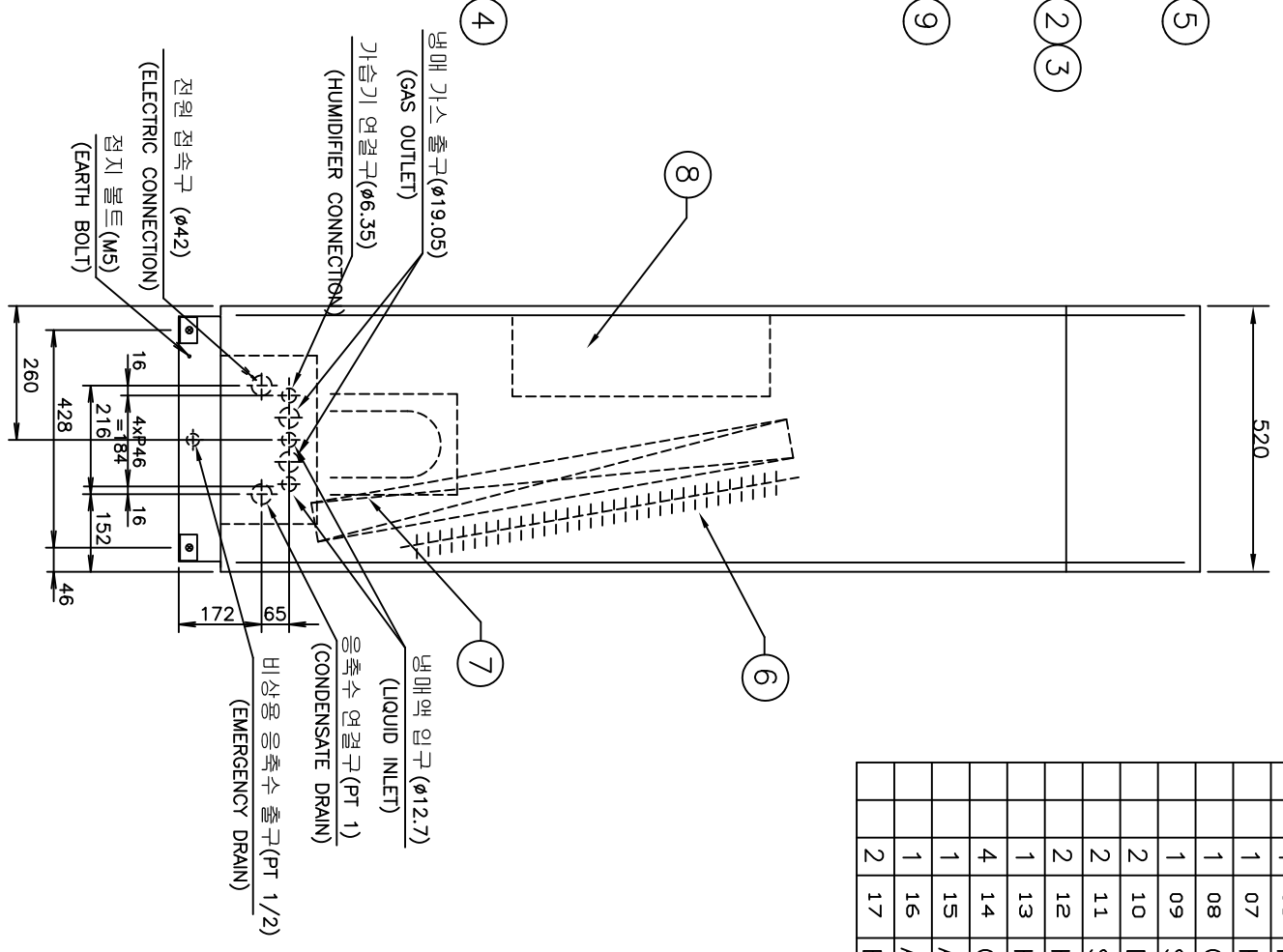
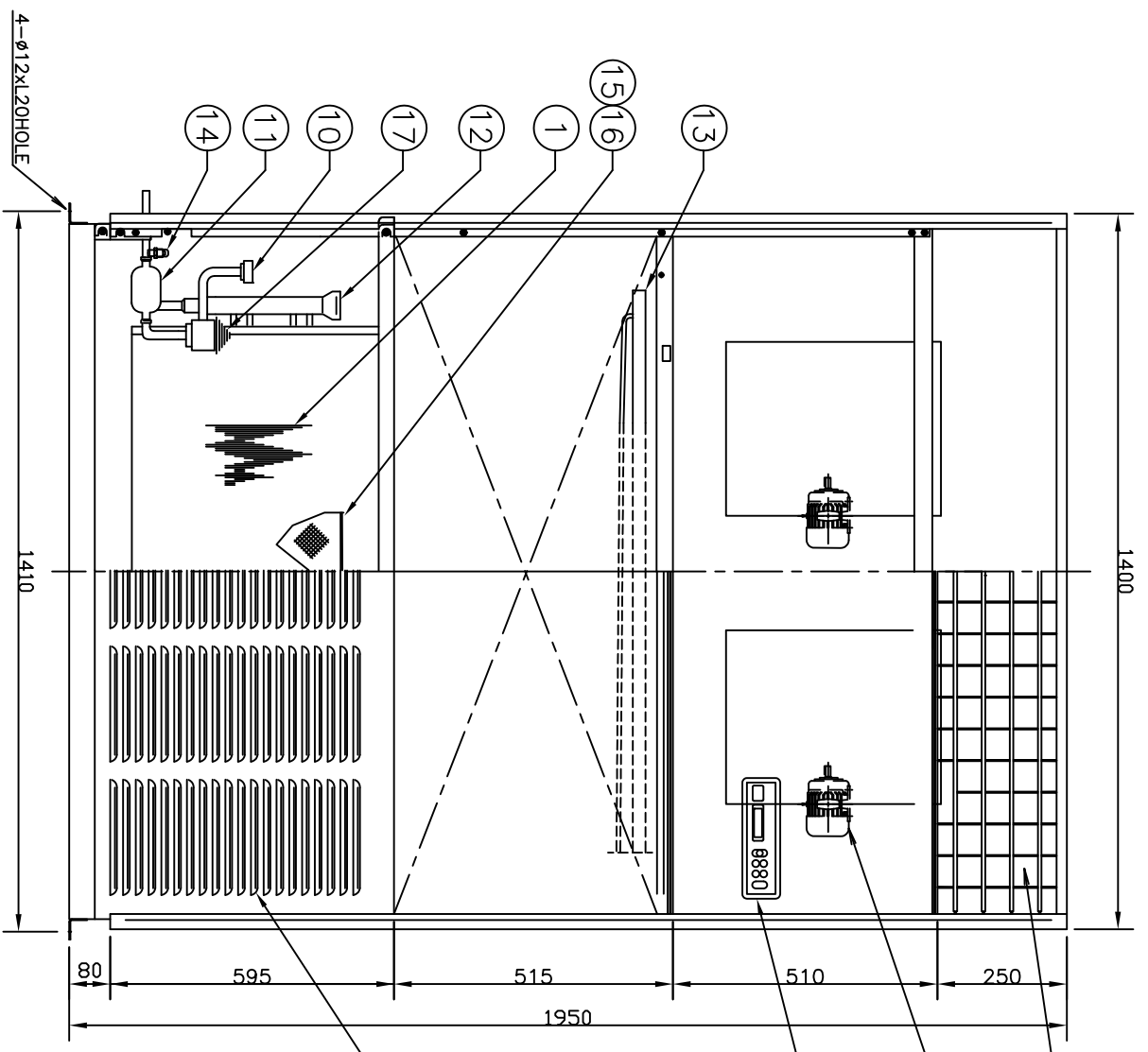


C	B	A	NO.	ALTERATION	DATE	CHKD	APPD	
			△					
			△					
			△					
Q'T	Q'T	Q'T	ITEM	DESCRIPTION	M.T.L.	REMARK	SHEAR SIZE	WEIGHT
1	01		EVAPORATOR	MULTI-PASS CROSS FINNED TUBE				
2	02		BLOWER	DS # 1-2/3 X 2EA				
2	03		FAN MOTOR	AC 3Ø V 0.4kW 6P 60Hz X 2EA				
1	04		AIR INLET GRILLE	ASS'Y				
1	05		AIR OUTLET GRILLE	ASS'Y				
1	06		HEATING COIL	ASS'Y				
1	07		HUMIDIFIER	ASS'Y				
1	08		CONTROL BOX	ASS'Y				
1	09		SWITCH BOX	ASS'Y				
2	10		DISTRIBUTOR	C3602BE Ø58				
2	11		STRAINER(OR FILTER DRIER)	1/2"				
2	12		HEADER	C1201T-1/2H Ø25.4				
1	13		HUMIDI. DISTRIBUTOR	ASS'Y				
4	14		CHECK JOINT	ASS'Y				
1	15		AIR FILTER	영화비닐 ASS'Y				
1	16		AIR FILTER	부직포 ASS'Y				
2	17		EXPANSION V/V	5RT				



**SPECIFICATIONS**

UNIT	MODEL	HT - A10GG3
COOLING CAPACITY	kcal / h	27,000
NORMAL AIR VOLUME	CMH	105
EXTERNAL STATIC PRESSURE	mmHq	0
HEATING CAPACITY	kcal / h	25,800
HEATING SOURCE	STEAM	kg/cm <sup>2</sup> G
HEATING SOURCE	HOT WATER	°C
HEATING SOURCE	ELECTRIC	30 kW
HUMIDIFIER CAPACITY	kg / h	7.0
HUMIDIFIER SOURCE	STEAM	kg/cm <sup>2</sup> G
HUMIDIFIER SOURCE	HOT WATER	kg/cm <sup>2</sup> G
HUMIDIFIER SOURCE	ELECTRIC	5.3 kW x 1 STEP
CONNECTION DIRECTION	HEATING	RIGHT
CONNECTION DIRECTION	COOLING	RIGHT
CONNECTION DIRECTION	HUMIDIFIER	RIGHT
CONNECTION SIZE	FOR COOLING	GAS 3/4" LIQUID 1/2"
CONNECTION SIZE	FOR HEATING	INLET A OUTLET A
STANDARD CONDITION	INDOOR	25°C ± 2°C DB, 55% ± 5% RH
STANDARD CONDITION	OUTDOOR	35°C DB

**NOTE**

- STANDARD PIPING DIRECTION IS LEFT.
- PAINTING COLOR : IVORY WHITE(RAL-341 OR MUNSELL NO. 5.6Y 9.0/1.0)
- HEATER : MAGNET CONTROL
- HUMIDIFIER : ELECTRONIC ELECTRODE
- OUTDOOR UNIT : RC-F5G7 x 2UNIT

TOLERANCES UNLESS OTHERWISE SPECIFIED		PRODUCT NAME		TITLE	
COMPUTER ROOM PACKAGED AIR CONDITIONER		HT - A10GG3		ASSEMBLY ( AIR COOLED TYPE )	
MODEL	HT - A10GG3	MODEL	HT - A10GG3		
DWN. BY	DESIGNED BY	CHKD. BY	APPD.	THIRD ANGLE PROJECTION	SCALE 1 : 15
				REFERENCE DRW. NO.	UNIT : mm
DRAWING NO.			HTU100-13120GG		



(주) 세원센추리