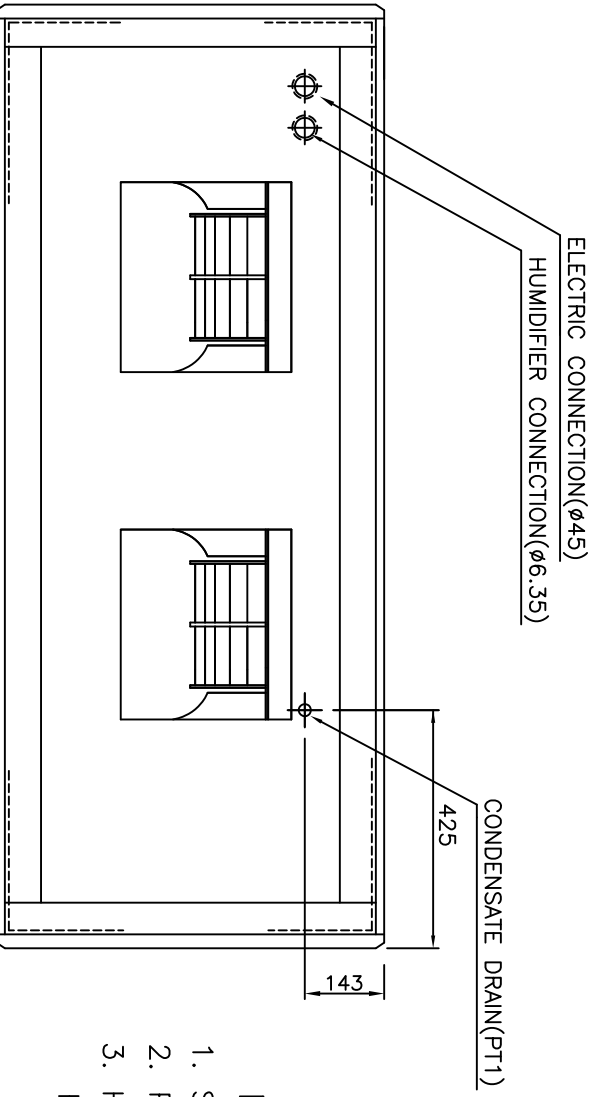
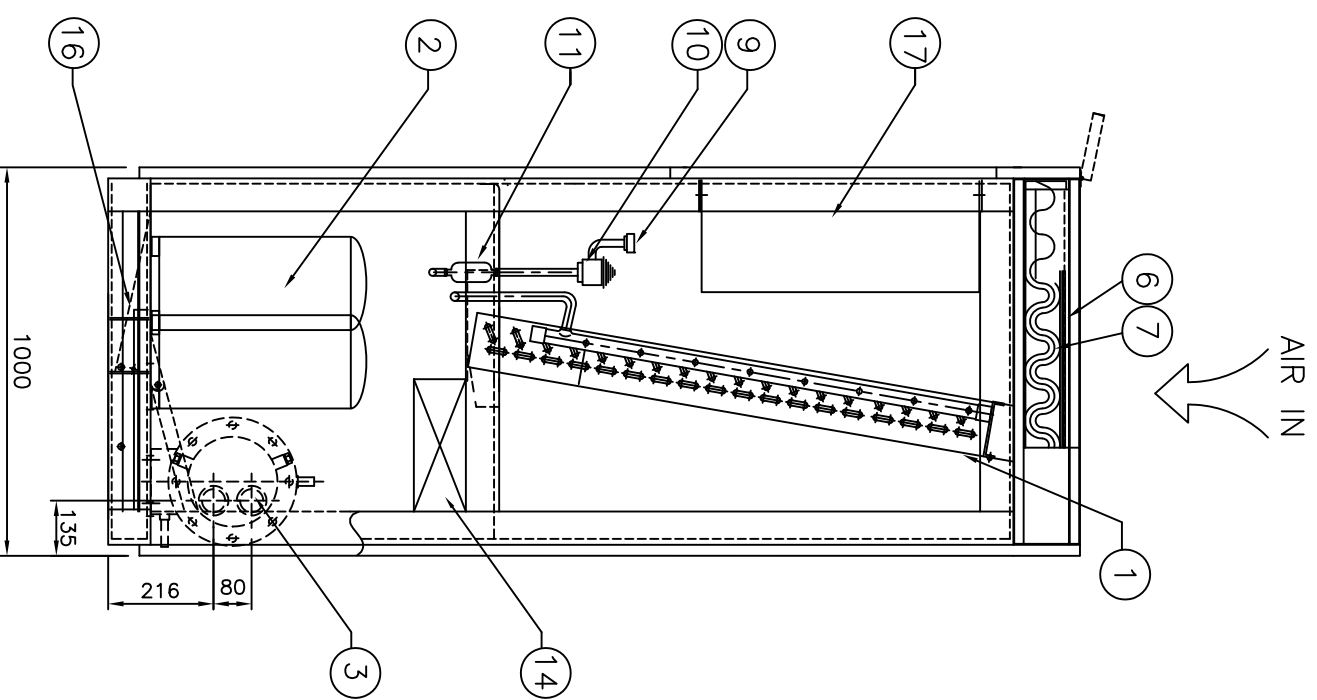
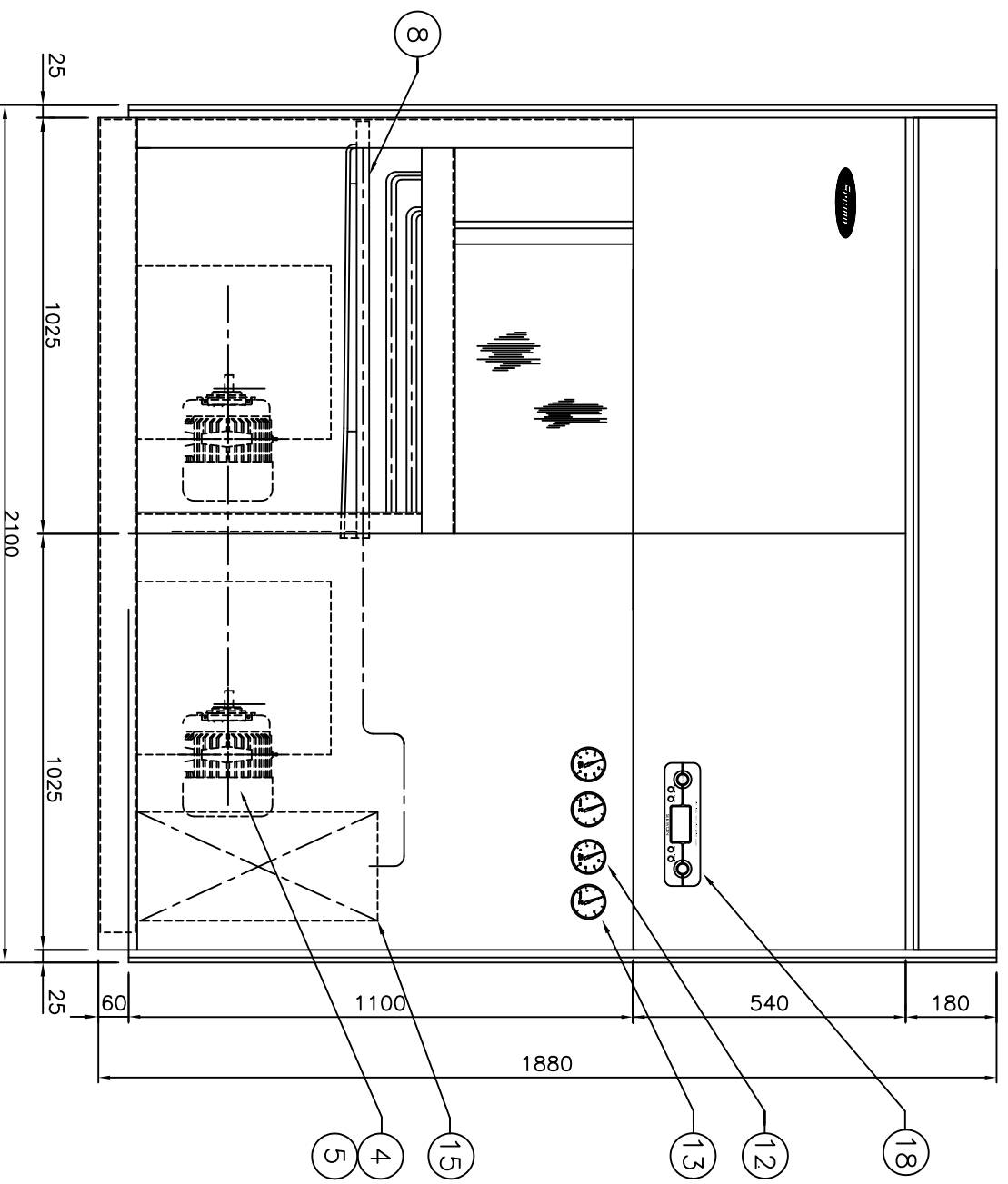


C	B	A	NO.	ALTERATION	DATE	CHKD	APPD	
			Δ					
			Δ					
			Δ					
			Δ					
QTY	QTY	QTY	ITEM	DESCRIPTION	MLT.	REMARK	SHEAR SIZE	WEIGHT
1	01		EVAPORATOR			MULTI-PASS CROSS FINNED TUBE		
2	02		COMPRESSOR			7.5HP		
1	03		CONDENSER			SHELL & TUBE		
2	04		BLOWER			DS # 2-1/2 X PEA		
2	05		MOTOR			V 1.12KW 8P 60Hz X 2EA		
3	06		AIR FILTER (PRE)			ASS'Y		
3	07		AIR FILTER (MAIN)			ASS'Y		
1	08		HUMIDI. DISTRIBUTOR			부속포		
2	09		DISTRIBUTOR			C3602BE		
2	10		EXPANSION V/V			7.5RT X 2EA		
2	11		STRAINER/OR FILTER (DRIER)			1/2"		
2	12		HIGH PRESS. GAGE			ASS'Y		
2	13		LOW PRESS. GAGE			ASS'Y		
1	14		ELECTRIC HEATER			ASS'Y		
1	15		HUMIDIFIER			ASS'Y		
2	16		DRAIN PAN			EGI		
1	17		CONTROL BOX			ASS'Y		
1	18		MAGNETIC S/W BOX			ASS'Y		



- NOTE
1. STANDARD PIPING DIRECTION IS RIGHT
 2. PAINTING COLOR : IVORY WHITE(RAL-341 OR MUNSELL NO. 5.6Y 9.0/1.0)
 3. HEATER : SSR + MAGNET CONTROL
- HUMIDIFIER : ELECTRONIC ELECTRODE

SPECIFICATIONS

ITEM	UNIT	MODEL	HT - W15CG3
COOLING CAPACITY	kcal / h		45,000
NOMINAL AIR VOLUME	CMH		200
EXTERNAL STATIC PRESSURE	mmHg		10~12
HEATING CAPACITY	kcal / h		15,480
HEATING SOURCE	HOT WATER		°C
	ELECTRIC		9 kW X 2EA
HUMIDIFIER			
SOURCE	HOT WATER		kg / h
	ELECTRIC		kg/cm ² G
			6.8 kW x 1 STEP
PIPING			
CONNECTION DIRECTION			(RIGHT) DOWN LEFT
			(RIGHT) DOWN LEFT
CONNECTION SIZE			(RIGHT) DOWN LEFT
			FOR COOLING GAS 3/4" LIQUID 1/2"
			FOR WATER INLET 50 A OUTLET 50 A
STANDARD CONDITION			
INDOOR C.WATER INLET TEMP			22 ±2°C DB, 50 ±5% RH
C.WATER INLET TEMP			30 °C DB
C.WATER QTY			11.9 m ³ /h

TOLERANCES UNLESS OTHERWISE SPECIFIED			
PRODUCT NAME	COMPUTER ROOM PACKAGED AIR CONDITIONER	TITLE	ASSEMBLY DWG. (WATER COOLED TYPE)
MODEL	HT - W15CG3	THIRD ANGLE PROJECTION	SCALE 1/20
DESIGNED BY		APPD.	
CHEKD. BY		REFERENCE DRW. NO.	
DWG. NO.		DRAWING NO.	HTD150-13220GG
(주) 세원엔지니어링			