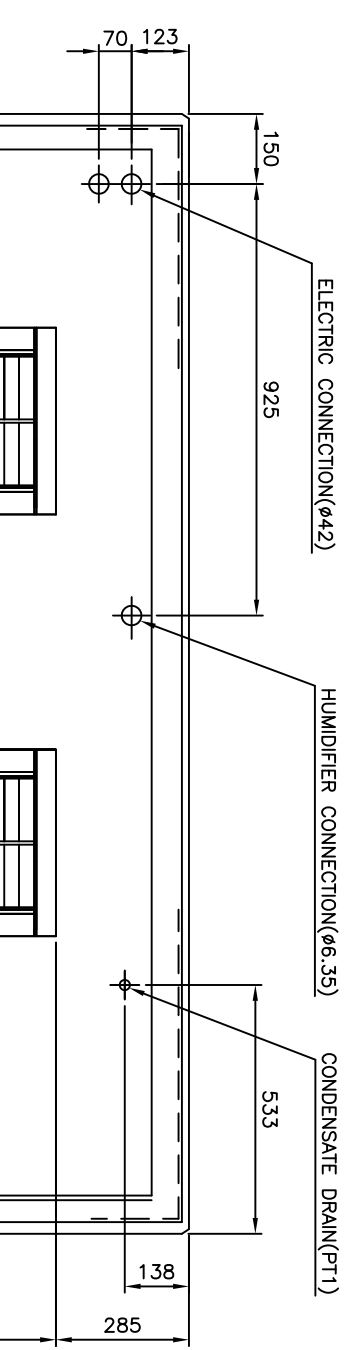
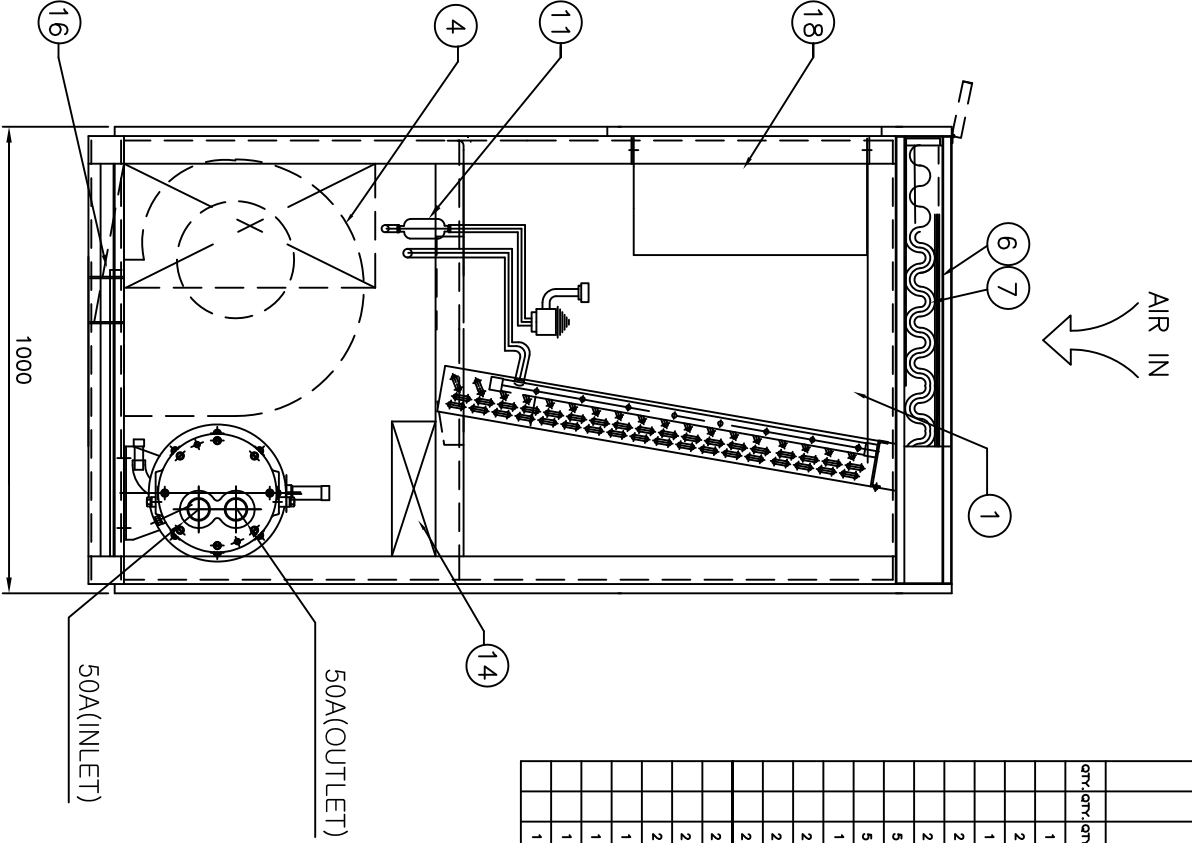
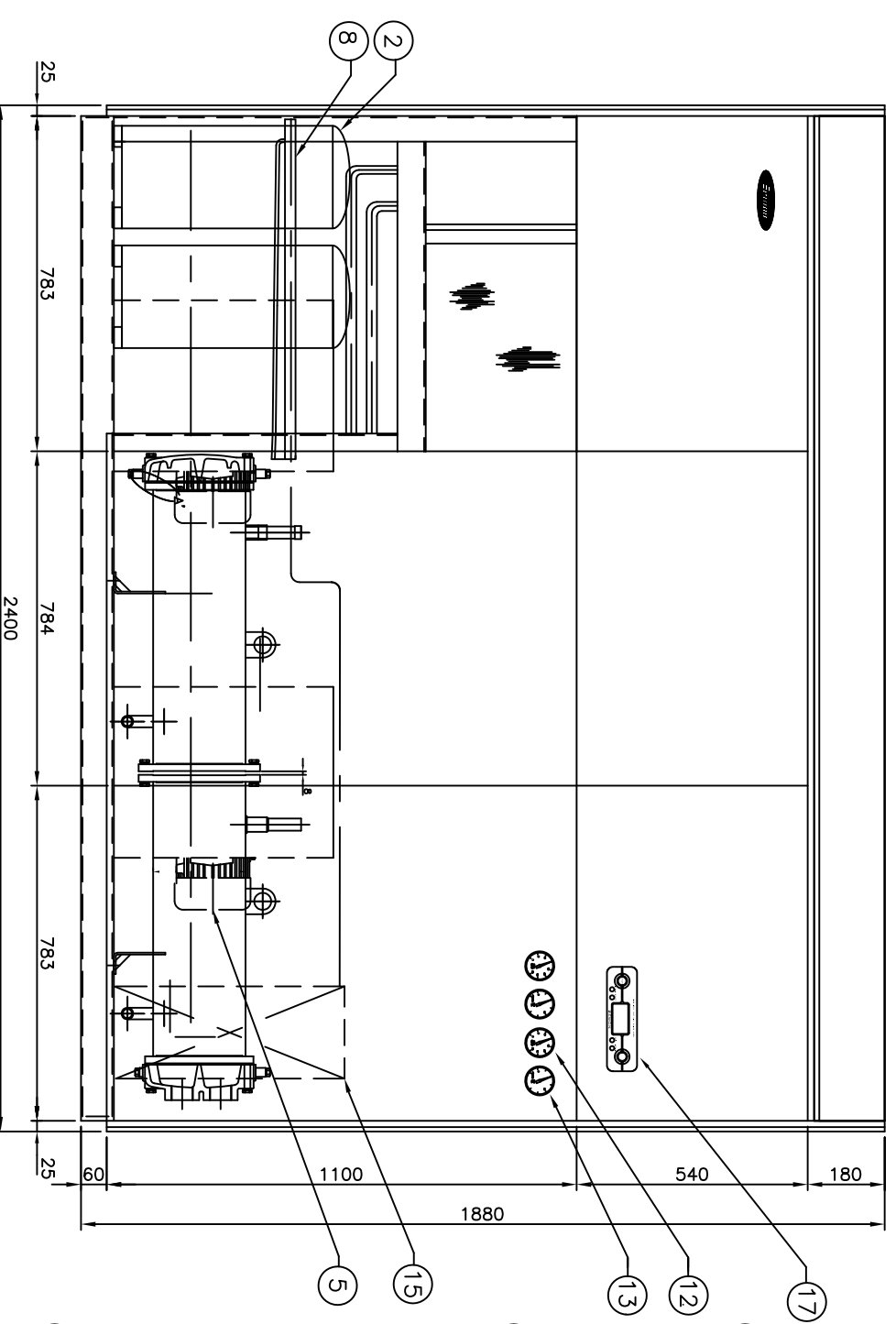


C	B	A	NO.	ALTERATION	DATE	CHKD	APPD	
			Δ					
			Δ					
			Δ					
			Δ					
QTY	QTY	QTY	ITEM	DESCRIPTION	M.L.T.	REMARK	SHEAR SIZE	WEIGHT
1	01		EVAPORATOR			MULTI-PASS CROSS FINNED TUBE		
2	02		COMPRESSOR			10HP		
1	03		CONDENSER			SHELL & TUBE		
2	04		BLOWER			DS # 2-2/3 X 2EA		
2	05		MOTOR			AC 3ø V 1.5kW 8P 60Hz X 2EA		
5	06		AIR FILTER (PRE)			ASS'Y		
5	07		AIR FILTER (MAIN)			ASS'Y		
1	08		HUMIDI. DISTRIBUTOR			ASS'Y		
2	09		DISTRIBUTOR			ø58		
2	10		EXPANSION V/V			10RT		
2	11		STRAINER(OR FILTER DRIER)			5/8"		
2	12		HIGH PRESS. GAGE			ASS'Y		
2	13		LOW PRESS. GAGE			ASS'Y		
2	14		ELECTRIC HEATER			ASS'Y		
1	15		HUMIDIFIER			ASS'Y		
1	16		DRAIN PAN			t 1.2		
1	17		CONTROL S/W			ASS'Y		
1	18		MAGNETIC S/W BOX			ASS'Y		



- NOTE**
1. STANDARD PIPING DIRECTION IS RIGHT
 2. PAINTING COLOR : IVORY WHITE(RAL-341 OR MUNSELL NO. 5.6Y 9.0/1.0)
 3. HEATER : SSR + MAGNET CONTROL
HUMIDIFIER : ELECTRONIC ELECTRODE

SPECIFICATIONS

ITEM	UNIT	MODEL
COOLING CAPACITY	kcal / h	HT - W20CG3
NOMINAL AIR VOLUME	CMH	260
EXTERNAL STATIC PRESSURE	mmHg	10~12
HEATING CAPACITY	kcal / h	20,640
HEATING SOURCE	STEAM	kg/cm ² G
HEATING SOURCE	HOT WATER	°C
HEATING SOURCE	ELECTRIC	24 kW
HUMIDIFIER HUMIDIFIER CAPACITY	kg / h	13.5
HUMIDIFIER SOURCE	STEAM	kg/cm ² G
HUMIDIFIER SOURCE	HOT WATER	kg/cm ² G
HUMIDIFIER SOURCE	ELECTRIC	10.1 kW x 1 STEP
PIPING CONNECTION DIRECTION	CONNECTION DIRECTION	COOLING WATER
PIPING CONNECTION DIRECTION	CONNECTION DIRECTION	HEATING
PIPING CONNECTION DIRECTION	CONNECTION DIRECTION	HUMIDIFIER
PIPING CONNECTION DIRECTION	CONNECTION DIRECTION	FOR COOLING
PIPING CONNECTION DIRECTION	CONNECTION DIRECTION	FOR HEATING
STANDARD CONDITION	INDOOR	22 ±2°C DB, 50 ±5% RH
STANDARD CONDITION	C.WATER INLET TEMP	30 °C DB
STANDARD CONDITION	C.WATER QTY	15.9 m ³ /h

ISSUED	PROJ. TITLE	환온습습기
APPROVAL	MODEL	HT-W20CG3
CHECKED	SHEET TITLE	ASSEMBLY (WATER COOLED TYPE)
DESIGNED	DWG. NO.	HTD200-13220CG
DRAWN	SCALE	1:17
	REFERENCE DWG. NO.	



(주) 세원센추리