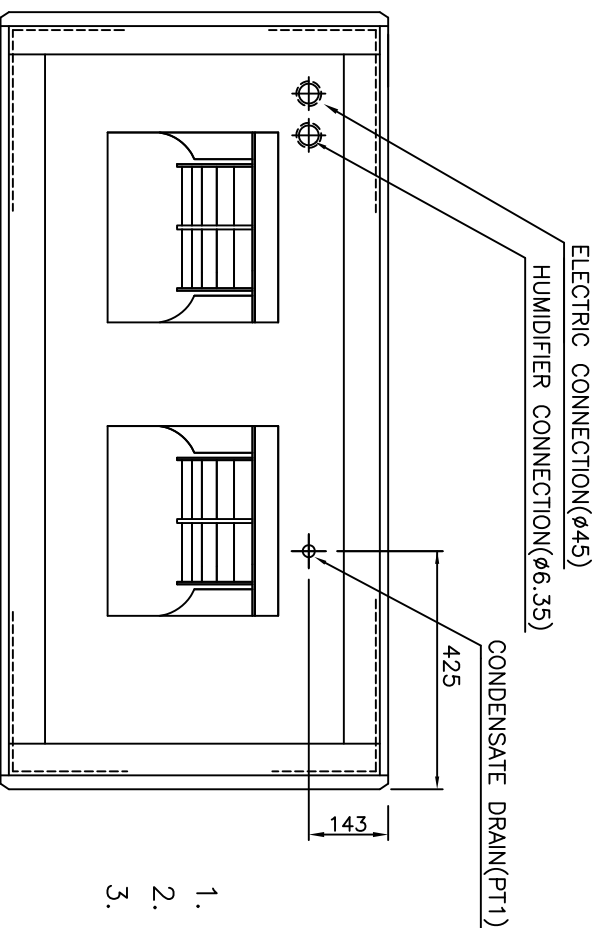
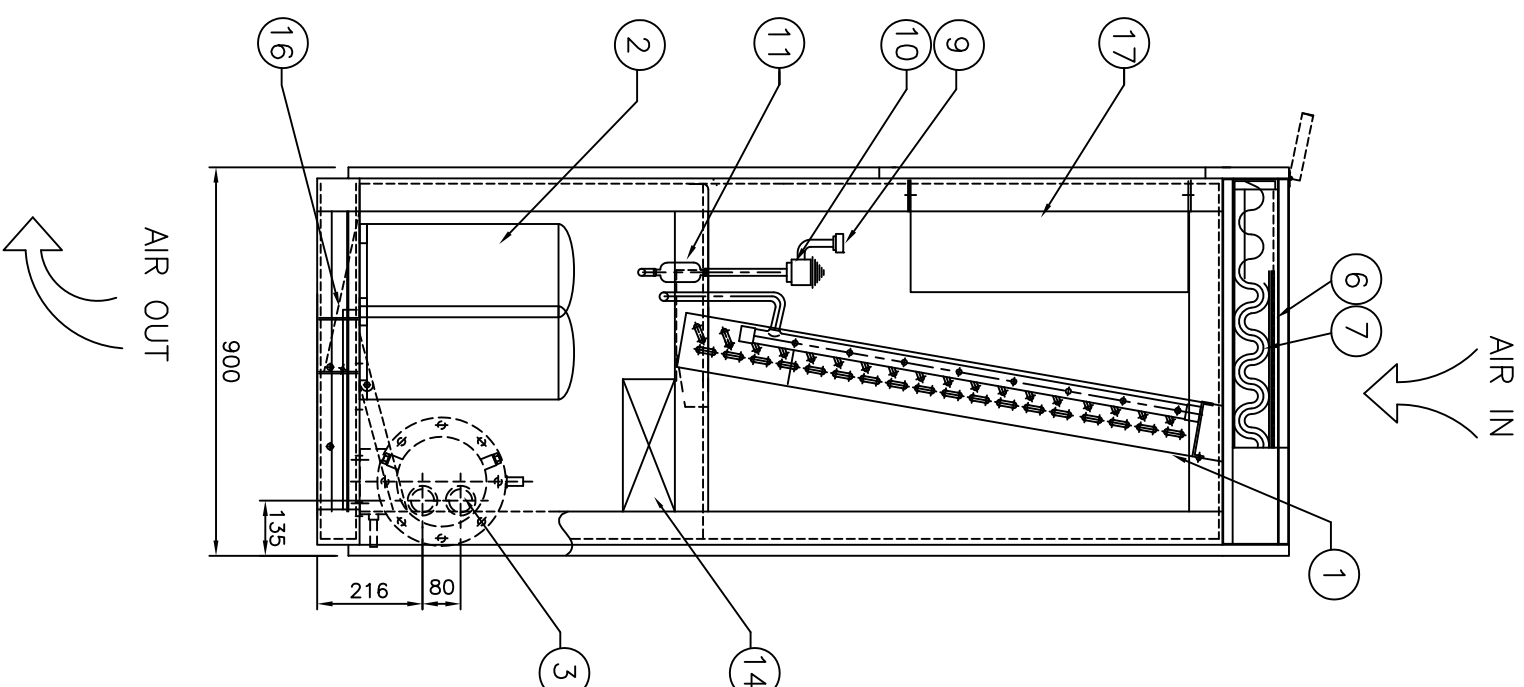
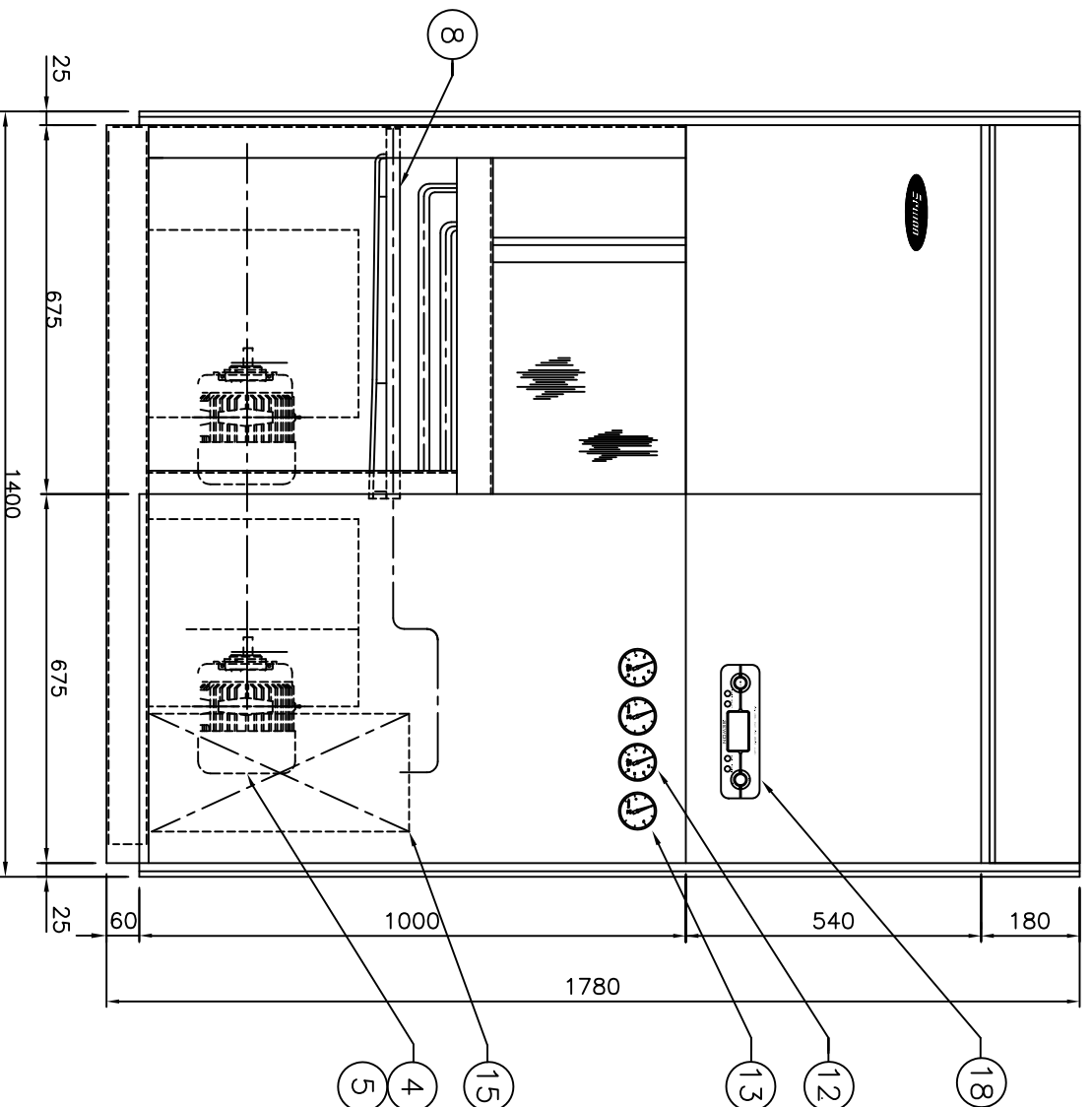


| C | B | A | NO. | ALTERATION | DATE | CHKD | APPD |
|-----|-----|----------------------------|-------------|------------|------------------------------|------------|--------|
| | | | Δ | | | | |
| | | | Δ | | | | |
| | | | Δ | | | | |
| | | | Δ | | | | |
| QTY | QTY | ITEM | DESCRIPTION | M.L.T. | REMARK | SHEAR SIZE | WEIGHT |
| 1 | 01 | EVAPORATOR | | | MULTI-PASS CROSS FINNED TUBE | | |
| 1 | 02 | COMPRESSOR | | | 3HP | | |
| 1 | 03 | CONDENSER | | | SHELL & TUBE | | |
| 2 | 04 | BLOWER | | | DS # 1-5/6 X 2EA | | |
| 2 | 05 | MOTOR | | | V 0.15kW 8P 60Hz X 2EA | | |
| 3 | 06 | AIR FILTER (PRE) | 영호비닐 | | ASS'Y | | |
| 3 | 07 | AIR FILTER (MAIN) | 부유포 | | ASS'Y | | |
| 1 | 08 | HUMIDI. DISTRIBUTOR | | | ASS'Y | | |
| 2 | 09 | DISTRIBUTOR | C3602BE | | Ø58 | | |
| 2 | 10 | EXPANSION V/V | | | 3RT | | |
| 2 | 11 | STRAINER/OR FILTER (DRIER) | | | 5/8" | | |
| 2 | 12 | HIGH PRESS. GAGE | | | ASS'Y | | |
| 2 | 13 | LOW PRESS. GAGE | | | ASS'Y | | |
| 1 | 14 | ELECTRIC HEATER | | | ASS'Y | | |
| 1 | 15 | HUMIDIFIER | | | ASS'Y | | |
| 2 | 16 | DRAIN PAN | EGI | | ± 1.2 | | |
| 1 | 17 | CONTROL BOX | | | ASS'Y | | |
| 1 | 18 | MAGNETIC S/W BOX | | | ASS'Y | | |



- NOTE
1. STANDARD PIPING DIRECTION IS RIGHT
 2. PAINTING COLOR : IVORY WHITE(RAL-341 OR MUNSELL NO. 5.6Y 9.0/1.0)
 3. HEATER : SSR + MAGNET CONTROL
HUMIDIFIER : ELECTRONIC ELECTRODE

SPECIFICATIONS

| | | | |
|--------------------------------|----------------------|------------------------|-----------------------|
| ITEM | UNIT | MODEL | HT - W6CG3 |
| COOLING CAPACITY | kcal / h | | 17,000 |
| NOMINAL AIR VOLUME | GM | | 80 |
| EXTERNAL STATIC PRESSURE | mmAq | | 3~4 |
| HEATING CAPACITY | kcal / h | | 7,740 |
| | kg/cm ² G | | ROW |
| HEATING SOURCE | HOT WATER | | °C |
| | ELECTRIC | | 4.5 X 2EA kW |
| HUMIDIFIER HUMIDIFIER CAPACITY | kg / h | | |
| | kg/cm ² G | | 6.6 |
| HUMIDIFIER SOURCE | HOT WATER | | 5.0 kW x 1 STEP |
| | ELECTRIC | | |
| PIPING CONNECTION DIRECTION | COOLING WATER | (RIGHT) DOWN LEFT | |
| | HEATING | (RIGHT) DOWN LEFT | |
| CONNECTION SIZE | HUMIDIFIER | (RIGHT) DOWN LEFT | |
| | FOR COOLING | GAS 7/8" LIQUID 5/8" | |
| STANDARD CONDITION | INDOOR | INLET 32 A OUTLET 32 A | |
| | C.WATER INLET TEMP | 22 ±2°C DB, 50 ±5% RH | |
| C.WATER QTY | | | 4.9 m ³ /h |

| TOLERANCES UNLESS OTHERWISE SPECIFIED | | | |
|---------------------------------------|--|------------------------|-----------------------------------|
| PRODUCT NAME | COMPUTER ROOM PACKAGED AIR CONDITIONER | TITLE | ASSEMBLY DWG. (WATER COOLED TYPE) |
| MODEL | HT - W6CG3 | THIRD ANGLE PROJECTION | SCALE 1/20 |
| DMN. BY | DESIGNED BY | CHKD. BY | APPD. |
| | | | |
| | | REFERENCE | DRW. NO. |
| | | | |
| DRAWING NO. | | HTD060-13220GG | |



(주) 세원센추리